

Nottinghamshire County

Chris Kelly: DIP Manager

Abigail Napper: DIP Data Analyst

Strategic developments

- Ensure clarity of journey.
- Communication.
- Right people/right place.

Principle points.

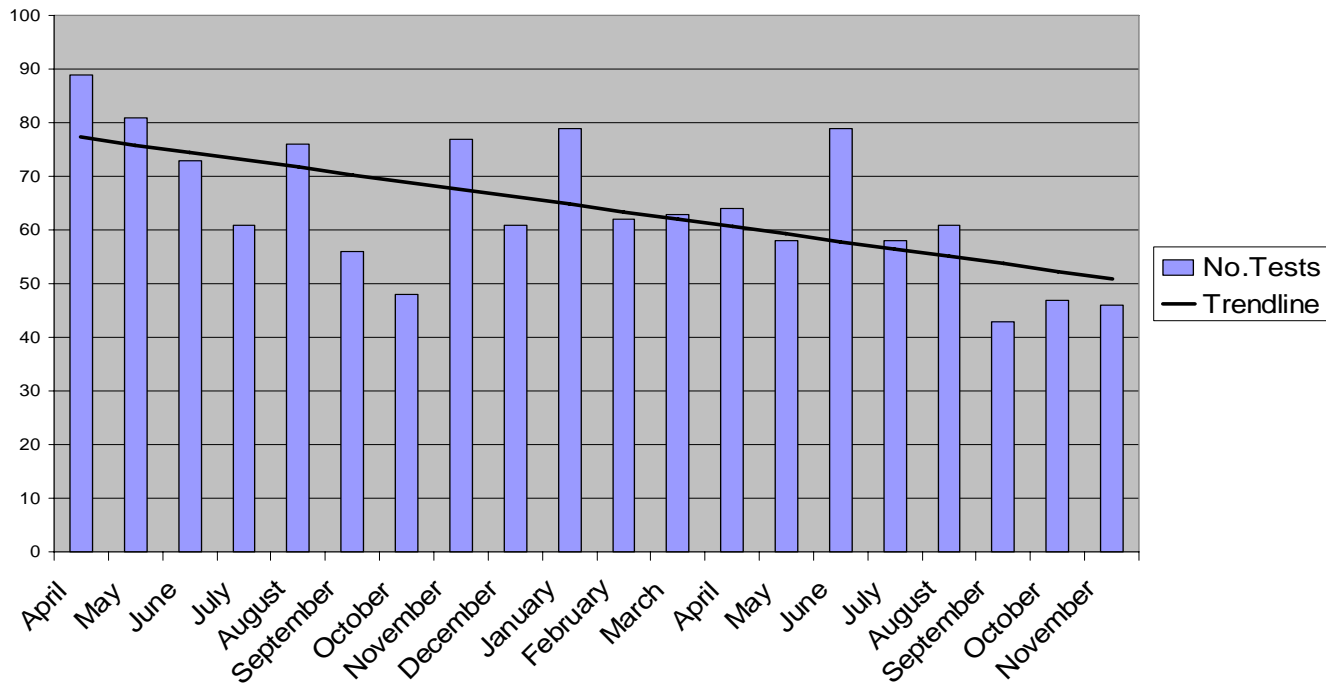
- Numbers Manageable.
- Not many new faces.
- Tracking essential.
- Early identification of mistakes.

Significant issues

- To continue as before.
- It can be done.
- Don't Panic.

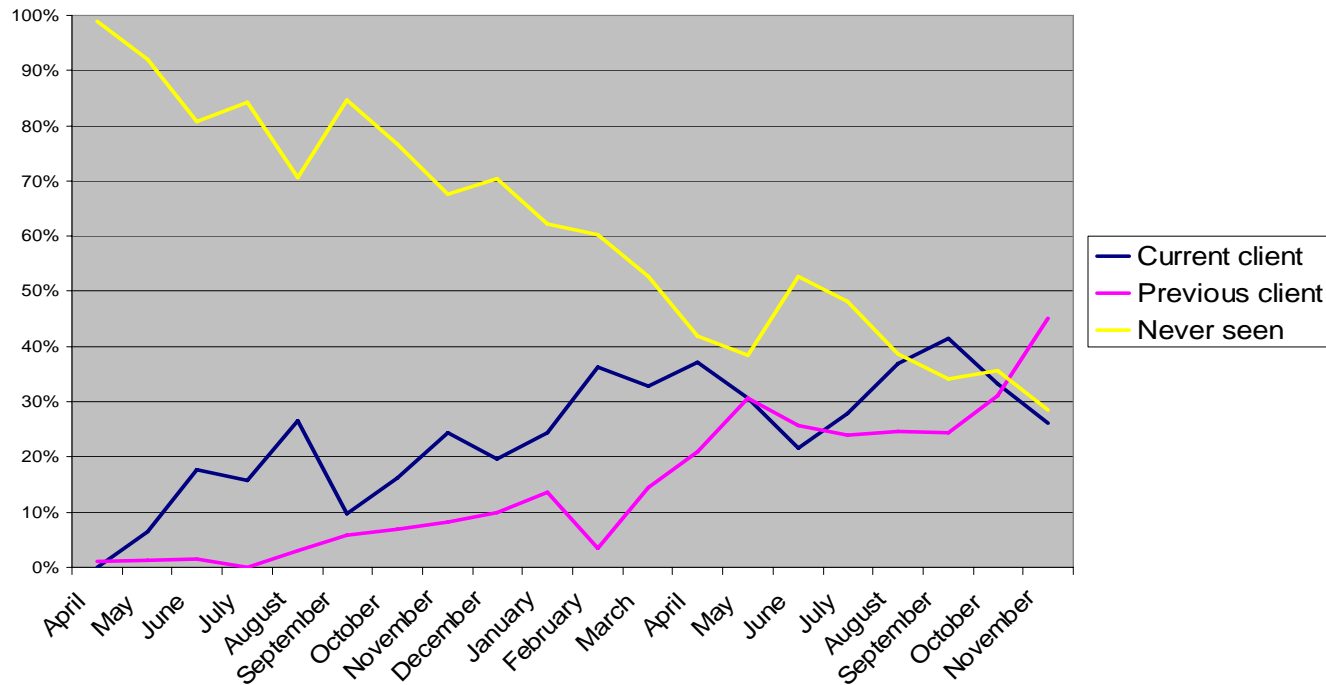
Background: Positive Tests

No. Positive Tests per month in North Nottinghamshire Custody Suites



Background: Client Split

Client split since Nottinghamshire Testing began



Impact on Test Rates

	Total Tests	Positive Tests	% Positive
April 04 – Mar 05 average/month	155	69	45%
April 05 - Nov 05 average/month	153	57	37%
Dec-05	228	71	31%
Increase %	49%	25%	-6%

- Proportion of positive tests continued to decline.

Impact on Client Split

	Never Seen	Previous Contact	Current Client
April 05 - Nov 05 average/month	41%	27%	31%
Dec-05	20%	52%	29%
Increase %	-21%	25%	-2%

- Continued downward trend of Clients never seen before.
- Continued rise in previous contacts.

Compliance

Wait in days	Missed	Seen	Grand Total	% Seen
0	1	31	32	97%
1		15	15	100%
2 - 7	5	7	12	58%
8 - 14	4	4	8	50%
15+		3	3	100%
Grand Total	10	60	70	86%

- RA in custody suite = nearly 100% compliance
- RA not in custody suite = 61% compliance
 - 46% contested test result
 - RoB helped to pick up missed RA's.